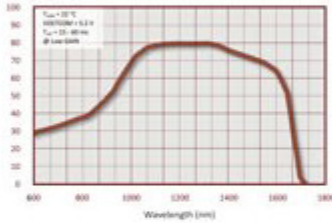
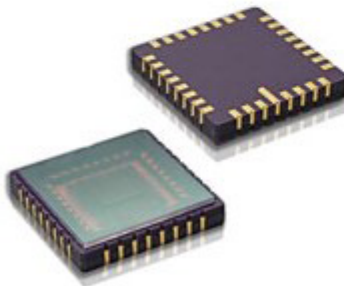


VIS-InGaAs matrix sensors (FPAs)



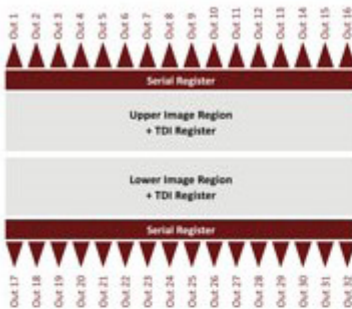
0.6 μm – 1.7 μm spectral range, extended into the visible
 in QVGA (320x256) + VGA (640x512) resolution
 uncooled 44CLCC and 64CLCC ceramics package

64 x 64 InGaAs matrix sensors (FPAs)



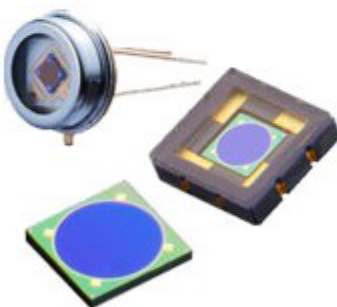
40 μm pixel @ 64 x 64 resolution
 0.9 μm – 1.7 μm spectral range
 uncooled 32CLCC ceramics package
 low price, 128 x 128 also available

4k-Si-TDI CCD



Conventional Time Delay & Integration (TDI)-CCD with vertical charge integration, bidirectional
 Split Full Frame, 4096 columns x 128 TDI-stages, 24 μm pixel
 32 outputs, Spectral range 300 - 1000 nm + EUV possible
 custom development

InGaAs Avalanche (APD) + PIN + Quadrant Photodiodes



APDs: \varnothing 200 μm chips, 1 GHz
 PINs: \varnothing 0.5 - 5 mm-chips or quadrant-chips
 TO (uncooled), T1 (TE-cooled), CLCC-package
 0.95 μm – 1.65 μm spectral range