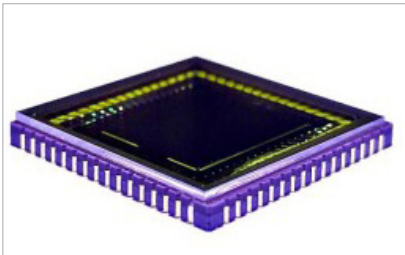


That's the News!

640 x 512 InGaAs-matrix sensor with reduced 15µm pixel pitch



Uncooled 64CLCC ceramics package, light 1.7g sensor weight

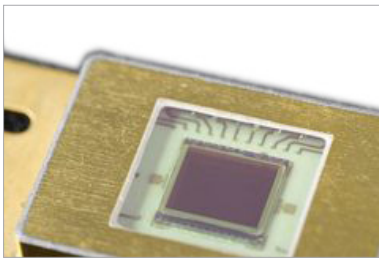
Same sensor area as 320 x 256 resolution with 30µm pixel (FPA320x256-C)

0.9 µm – 1.7µm spectral range, QE > 70%

Read out rate ≥ 240 fps at full image + 30 kfps at smallest region of interest (ROI)



Improved 2.2µm InGaAs-matrix sensor



Higher manufacturing yield for availability in series

320x256 pixel-resolution, 1.2µm – 2.2µm spectral response

Improved pixel operability > 97% min. (often 99% and better)

Low dark current, improved signal homogeneity from pixel to pixel

First developmental samples for 640x512 pixel-resolution



8K Si-TDI CCD image sensor



8192 pixels, 7µm x 7µm pixel size

Up to 256 TDI-stages selectable, bidirectional

16 outputs, 100x Antiblooming, > 33 kHz TDI-rate

Chip on carrier or custom sensor package

