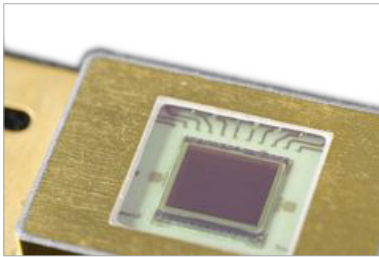


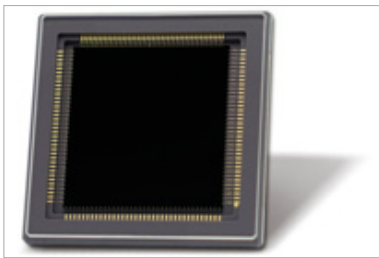
That's the News!

Improved 2.2 μm InGaAs-matrix sensor



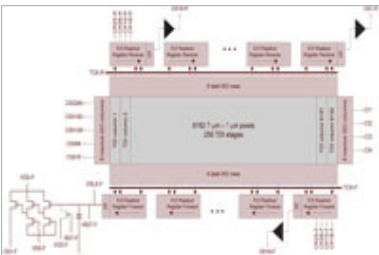
Higher manufacturing yield for availability in series
320 x 256 pixel-resolution, 1.2 μm - 2.2 μm spectral response
Improved pixel operability > 97 % min. (often 99 % and better)
Low dark current, improved signal homogeneity from pixel to pixel

Scientific 4 k x 4 k Si-CMOS image sensor



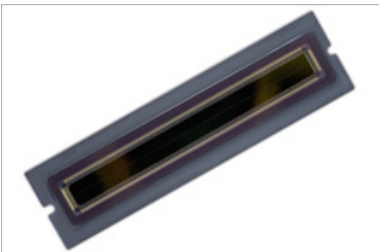
4 k x 4 k Pixel Resolution, 11 μm Pixel size
Back illuminated: 95 % q.e. at 850 nm
Read out noise of 1.2 e⁻ at -50 grd C
Up to 48 Hz Read out rate, up to 96 dB dynamic range

8 k Si-TDI CCD image sensor



8192 pixels, 7 μm x 7 μm pixel size
Up to 256 TDI-stages selectable, bidirectional
16 outputs, 100 x Antiblooming, > 33 kHz TDI-rate
Chip on carrier or custom sensor package

Si-CMOS linear image sensor



2100 x 1 up to 32.000 x 8 pixels
5 μm up to 14 μm pixel
Line rate up to 46 kHz, various operation modes